

Tim Davis Design achieves diversified international **Success**

Clients, colleagues describe attention to detail and respectful relationships



Private condominium, Cape Town, South Africa



Private condominium, Cape Town, South Africa



TIM DAVIS DESIGN



Private condominium, Cape Town, South Africa

STAFF WRITER – The Ottawa Construction News

When you view Tim Davis Design's recent portfolio, you'll see work encompassing a luxury condominium in Cape Town, South Africa, exterior signage for an Ottawa high technology business, various projects at the National Gallery of Canada . . . and more.

All of this work is coordinated by Davis and his team of resourceful associates – with clients, colleagues and suppliers all observing that Davis combines creative flair with practical understanding, great attention to detail, and truly impressive business practices.

"He and his staff are a pleasure to work with," says Gordon Filewych, chief of design at the National Gallery of Canada. They are extremely professional and diligent – and provide great continuity of work."

Meanwhile, Ron Clifton, CEO of International Data-casting, says he enjoys working with Tim Davis both for his business and residential design projects.

His company wanted to put a new sign on its headquarters building. This seemingly simple project, however was complicated by the leasehold and city rules, involving several levels of authority and approval. "He did excellent work for us on that project, both for the sign design, and more importantly, ensuring all the approvals were in place."

Clifton liked the way Davis conducted his business so much that he contracted him to design renovations to their home, a condominium. "He is great at project management – has a great team there – and takes care of all the day-to-day stuff in managing the subcontractors," he said.

Davis got his start in the mid 1990s, after immigrating to Canada from the United Kingdom and working for Murray and Murray Architects who were then designing the Palladium project (home of the Ottawa Senators, now Scotiabank Place) and various overseas projects. Qualified in the fields of both architecture and engineering in the United Kingdom, Davis founded his own Ottawa design practice in 1995. From the start, he found a critical ally and early supporter – Claude Lavoie of Gaston Lavoie Cabinet Shop in Ottawa.

Tim Davis Design

Continued from page C1


Davis reflects Lavoie's traditional ethical and craft-oriented values, resulting in loyalty and support from suppliers and colleagues – architects often commission him as a designer when they need highly detailed and accurate millwork and interior finishing designs.

Davis, who has taught design at Algonquin College, maintains excellent relationships with the college and frequently provides experience for students and recent graduates – giving them career challenges rarely experienced for someone just entering the business. Julia Smith, a talented graduate from Algonquin's interior design program, has quickly become Davis's "right hand person". Alan Todd, formerly chief of design at the National Gallery of Canada, is retained by the practice as a senior consultant and the practice is also represented in Montreal by Isabelle Gauthier, an interior design graduate with a specialty in lighting design.

Todd said: "My design work in the museum, art gallery and exhibition sectors can demand exceptional attention to detail where national treasures are concerned. In a competitive business I succeed because I am able to guarantee my institutional clients a product that conforms to the best international standard. What has impressed me about my association with Tim Davis and

Continued on page C3

YMCA-YWCA Newcomer Information Centre boardroom, Ottawa

LTR INDUSTRIES

LTR Industries is proud to have provided the millwork for many of Tim Davis Design projects locally and abroad. We look forward to new and exciting projects.

OUR MISSION

LTR's dedicated team uses innovative solutions to provide high quality products, on time to our valued customers

For more of Tim Davis Design photos, please visit our website www.ltrindustries.com. Email: mail@ltrindustries.com

Congratulations to
Tim Davis Design.
We are proud
to be associated
with your success.

**YORK
CONSTRUCTION
LIMITED**

159 Colonnade Road S., Ottawa, ON K2E 7J4
Tel: (613) 795-2743 Fax: (613) 241-4666

Tim Davis Design

Continued from page C2

his core team is the constant broad level of service and design integrity demonstrated about all matters related to the design and production process that delivers complete results.”

Brian Vlaming, CEO of LTR Industries, which fabricates millwork and interior finishings, says Davis always takes care to provide extremely detailed and clear instructions – and gives his team challenging projects which engage LTR’s employees. “His jobs are always unique and well detailed,” Vlaming said. “He always expects a high level of quality and finish – he’s very consistent in the type of work we can expect.”

Davis isn’t a push-over – he seeks out and ensures he has competitive bids from qualified suppliers – but the suppliers know the competition will be fair, and when their work is done, they’ll receive proper recognition and compensation.

Salli McSweeney, from the Interior Design Group (IDG), says she is impressed with how Davis maintains and enhances relationships with suppliers and colleagues, such as her own business. Davis is an excellent listener, she said. “He’s very good at administration as well as design.”

Similarly, general contractor Tony O’Malley, president of A.W.O. Holdings, says he enjoys working with Davis because “he’s very accurate on his dimensions, and very set in on his details.” O’Malley says he has worked with Davis for about 10 years including projects in Ireland, France and



CTV, Ottawa, sets for Question Period

England.

“Davis incorporates new ideas for the client, rather than just run of the mill rubber base on drywall,” he said. “There’s interesting details in corner guards, glazing,

making sure the finish corresponds with electrical utilities, and things like that. He

Continued on page C4

ARDESIA
tuiles & pierres

Proud supplier to
Tim Davis Design!

t: 514-733-9925

f: 514-733-6125

8120, boul. Décarie |
Montréal QC H4P 2S8 | www.ardesia.ca | info@ardesia.ca

Conway Door and Hardware Inc.

Distributor of

Total Door

**Proud to be part of the
Tim Davis Design Team.**

Mike Conway, President

159 Colonnade Rd, Unit #3, Ottawa, Ontario K2E 7J4

(613) 226-2268 Fax: 226-7224 email: mconway@conwaydoor.com

Congratulations to Tim Davis Design.
We are proud to be part of your success.

Landscape your living room.

Personalized upholstery | Coordinated home accents | Complimentary design services



COPLEY SOFA

NORWALK
FURNITURE
Just Get Comfortable.

1677 Carling Avenue
(Carling @ Cole) 729-2355

Ask us about Special Financing Plans available
when using your Norwalk card (subject to credit approval)

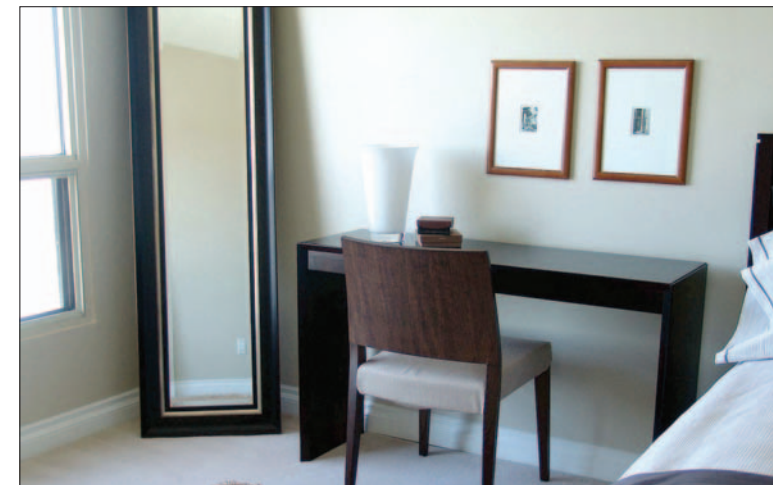
Tim Davis Design

Continued from page C3

tends to want to place everything in the correct manner rather than (simply design) run of the mill tenant fit ups."

Davis' attention to quality and detail has resulted in some significant large scale commissions, and ongoing business with international companies like Pacific Network Services Ltd., a financial services company, with assignments in Vancouver, B.C., Shannon (Ireland), Paris (France) and Oxford (England) in addition to Ottawa (where the company operates the Accu-Rate foreign exchange service.)

More recently, Pacific Network Services sought out Davis to "completely decorate, furnish and equip a very high-end penthouse



Apartment Staging for Cindy Sezlik of CSG Homes, furniture provided by Decorleans.

apartment in Cape Town overlooking the sea" for one of its senior executives. So Davis mobilized his team and travelled to South Africa to complete the work.

For international projects, "we do a research visit where we measure and look at the property in detail and



Signage for International Datacasting, Kanata, fabricators JBL Signs

then we try to form some key alliances with local trades or suppliers and through talking with them we develop a temporary network of qualified people, and supplement that by taking people from here to do the work, which in some

cases works better than using local employees," Davis said.

Davis sees more work in the future in a diversity of public and private sector projects, in Canada and overseas, all of which will benefit from his team's

great attention to detail and quality.

"The best buzz you get as a designer is when you walk onto the site and see the things that have been in your head and on paper, sometimes for many months, right there in front

of you. And of course it is always very rewarding when a client is delighted with the outcome of the project and provides positive feed back and subsequent referrals" he said.

Here is a sampling of some current Tim Davis Design projects:

- * A new kick boxing studio for martial arts expert Bill Gatchell's company 100% Martial Arts, in Orleans and a new franchise for 100% Martial Arts in Vaughan, near Toronto. "Both of these projects will take Martial Arts studio interiors to a new level in this area and confirm this company as a market leader in Ontario," Tim Davis said;
- * Design of an Ottawa prototype franchise location for a proposed Isobels Cupcakes and Cookies store.
- * Retail display systems for Dymon Storage Group. "We also did the whole reception and retail area for Metcalfe Realty's Self Storage Facility at the City Centre site," Davis said;
- * A new studio set for CPAC, currently in the planning stage, "a referral from the people at CTV who we did a new studio for last year for Question Period," Tim Davis said;
- * Ongoing work at the National Gallery of Canada. The practice has undertaken more than 80 projects to date at the National Gallery, ranging in scale from mounts and cabinets for individual art objects, through custom furniture and assistance with exhibit design, to architectural changes to the building;
- * "We have extended our working in the cultural sector, currently assisting with two exhibits for the Vancouver Art Gallery and also working with one of the big cultural institutions in Montreal"
- * Fit up and interior work at the new Royal Ottawa Hospital; including the reconfiguration of the main reception area and a new geriatric waiting area;
- * The complete refurbishment of a high-end apartment in the Glebe;
- * Remodelling of a Montreal restaurant;

For more information:

You can visit <http://www.timdavisdesign.com/>, phone (613) 744-2352 or email timdavisdesign@primus.ca.

Congratulations to Tim Davis Design.



ELEVATOR CAB RENOVATIONS
RÉNOVATION DE CAGES D'ASCENSEUR

- CUSTOM CAB DESIGN
 - DECORATIVE METAL
- RAISED PANELS SAFETY GLASS
 - STAINLESS STEEL
 - CEILING SYSTEMS
- WALL & FLOOR COVERINGS

Congratulations to Tim Davis Design!

2570 Blackwell, Unit 101, Ottawa, Ont. K1B 5R1
(613) 745-4870 Fax: (613) 745-8181
ecr@elevatorcabs.ca
www.elevatorcabs.ca



Glass Frosting - Solar Control - Security

AP WINDOW FILM

www.apwfilm.com

(613)

567-8468

1506 Michael St.
Ottawa, On. K1B 3S1



National Gallery of Canada, Artissimo kiosks, with NGC Design Services, fabricators LTR Industries



Pacnet (Europe) Ltd., Shannon, Ireland, new boardroom



National Gallery of Canada, temporary protective works, with NGC Design Services, fabricators ECR

A.W.O.

HOLDINGS

General Contracting – Commercial, Industrial

Congratulations to Tim Davis Design

R.R. #2 Chesterville, Ontario K0C 1H0
Office: (613) 448-2901 Pager: (613) 780-4799 Fax: (613) 448-3142

Congratulations to Tim Davis Design.



Serving The Ottawa Region Since 1971

860 Taylor Creek Drive # 1, Orleans, Ontario, K1C 1T1
Tel: (613) 824-1466 / (613) 824-1477 Fax: (613) 824-4363
www.perailandson.com andrerrail@on.aibn.com

Congratulations to Tim Davis Design.

Lumigraf

Decorative Resin Sheets

5680 Fullum, Montreal, Quebec H2G 2H7
Tel: 514-277-1495 866-877-1495 Fax: 514-277-6488
sales@lumigraf.ca www.lumigraf.ca

Congratulations Tim Davis Design!

BRODER ELECTRIC LTD.

Established 1932

Industrial - Commercial
Electrical Contractors

Tel: (613) 224-1176 Fax: (613) 224-1177
14 Grenfell Crescent, Nepean, ON K2G 0G2